

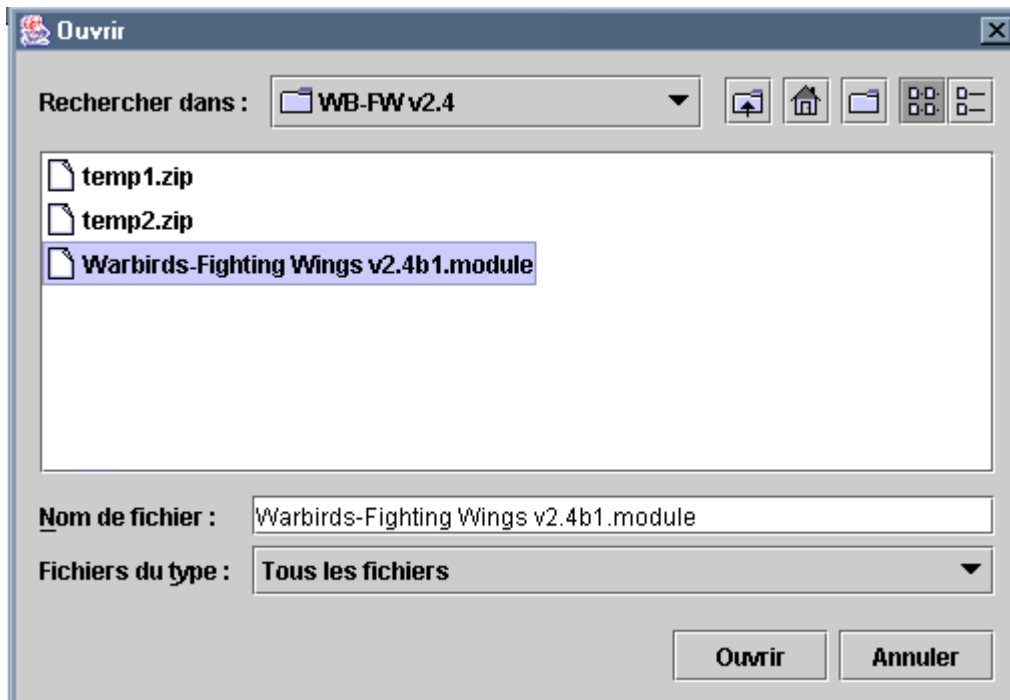
Using VASSAL for Warbirds and Fighting Wings

Opening a VASSAL module

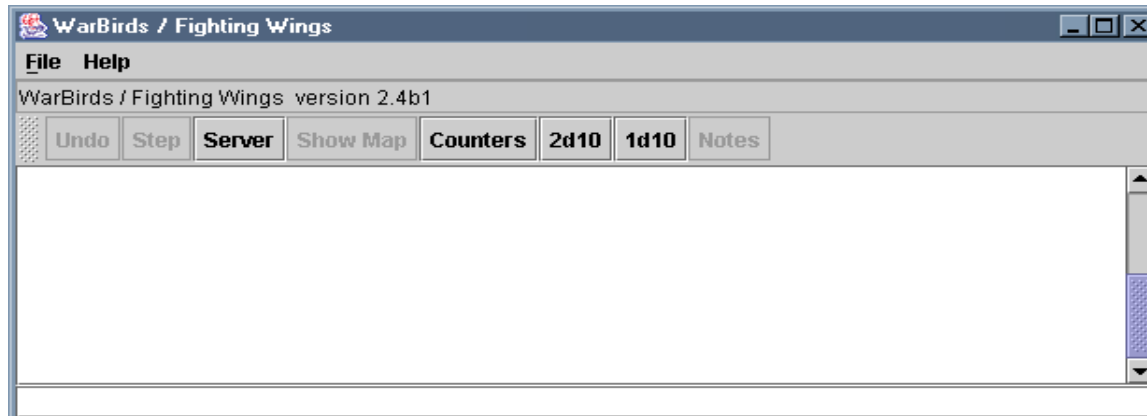
1. Open VASSAL.exe;
2. Click on "Play module"



3. Choose the "Warbirds/Fighting Wings" module

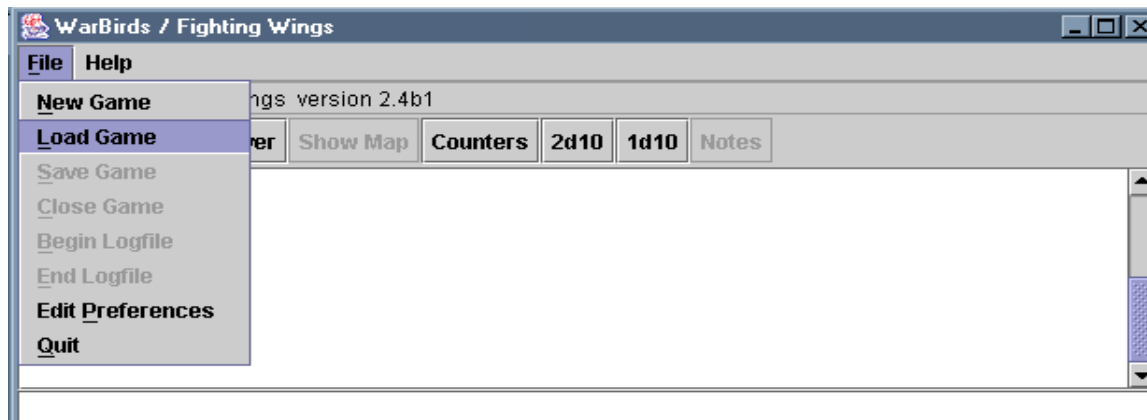


You'll obtain this "Controls" windows.

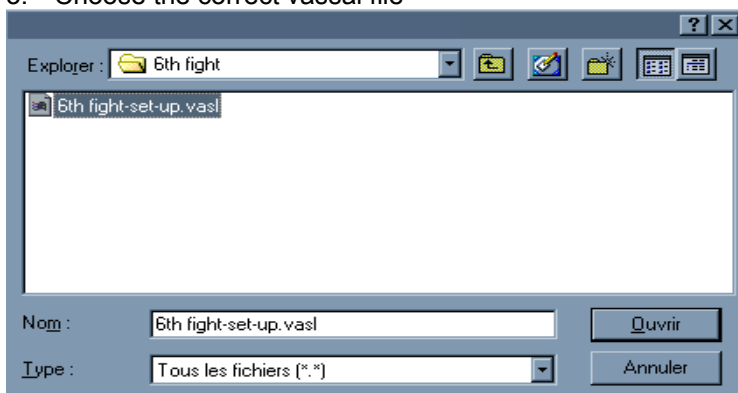


To load a log file

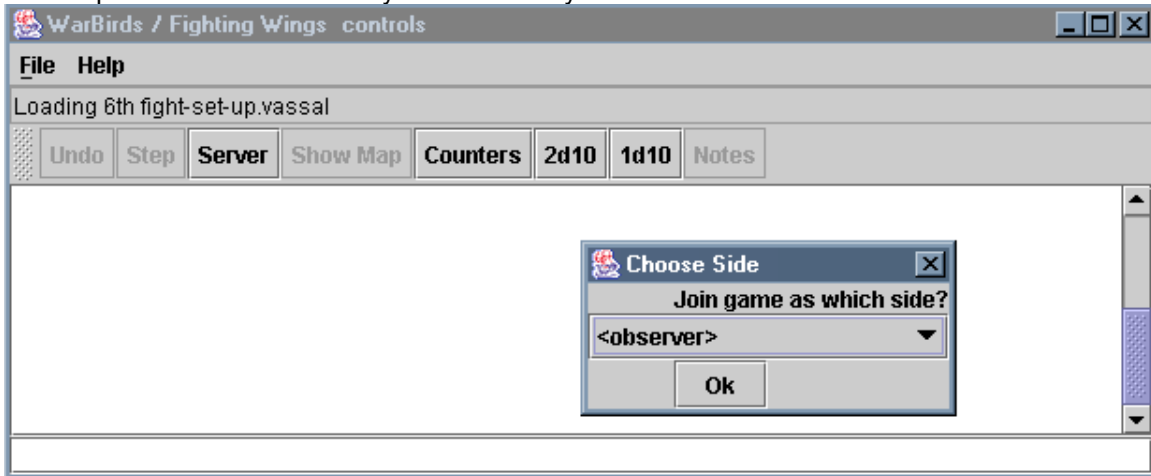
1. Click on the File menu
2. Choose Load game



3. Choose the correct vassal file



When opened VASSAL will ask you which side you want to be.

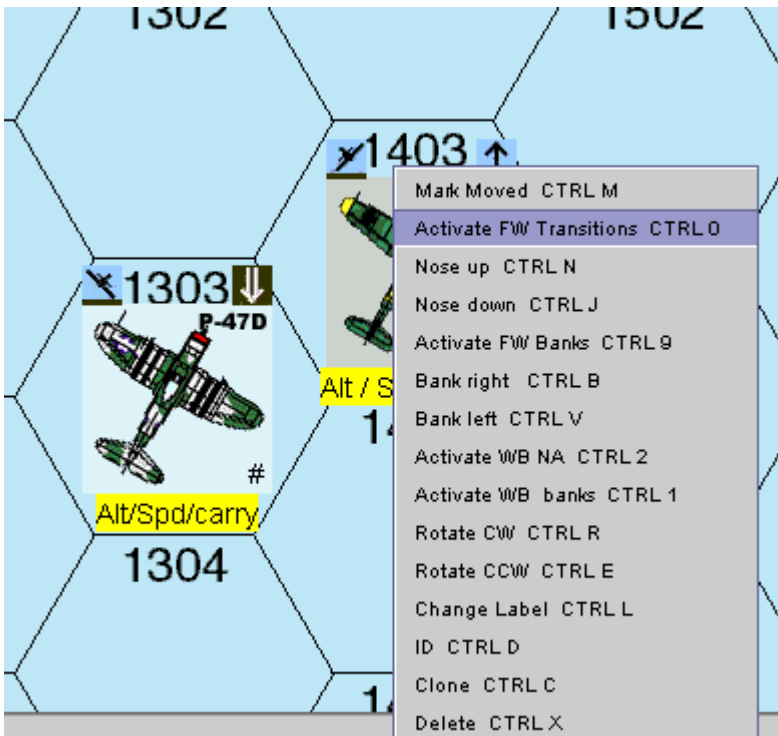


When loaded a board overview will be show.
Reduce it and click on the Show map button.
The map will now be shown.

The Overview map is used to fast find the counters on the map.
The red rectangle will be the part of the map shown on your screen.

Playing with VASSAL

Right clicking a counter will show a menu.



The menu show the Hotkeys:

Note: this module was designed to be used for JD Webster's Fightings Wings(FW) series of game and for Steve Pancrazio's Warbirds(WB) in current development and playtest.

Banking hotkeys:

CTRL 1 : Activate WB banks on the left on the counter top

CTRL 9 : Activate FW banks on the left on the counter top

CTRL B : Change the bank counter to the right

CTRL V : Change the bank counter to the left

Attitude hotkeys:

CTRL 2 : Activate WB Nose Arcs on the right on the counter top

CTRL 0 : Activate FW transitions on the right on the counter top

CTRL N : Change the attitude counter a level up

CTRL J : Change the attitude counter a level down

Counter hotkeys:

CTRL D : ID of the counter

CTRL L : Change the label (I suggest the following format Altitude / Speed / carry, but anything can be written).

CTRL M : Place a "moved" marker on the a/c counter






















CTRL C : Clone the counter (useful when more than one counter of the same type is needed)

CTRL X : Delete the counter

Banking notations:

FW Banks notation		WB Banks notation	
	LVL	0	
	RB	R30	
	IRB	R60	
	INV	R90	
	ILB	R120	
	LB	R150	
		180	
		L150	
		L120	
		L90	
		L60	
		L30	

Attitude notations:

FW transitions notation		WB Nose Arcs notation	
	LVL	0	
	SHC	15C	
	STC	30C	
	VC	45C	
	SHD	60C	
	STD	75C	
	VD	90C	
	Stall	15D	
	Spin	30D	
		45D	
		60D	
		75D	
		90D	