

562227



Powerful digital performance, easy operation

Complete document management solutions for connected workgroup environments

DIGITAL COPIER/
PRINTER/FAX/
SCAN SYSTEMS



Take charge of your documents

Designed for high productivity and flexible functionality, the Lanier 5622 and 5627 provide everything workgroups need to create, distribute, duplicate and archive high-quality documents.

Versatile performance. The 5622/27 combines the features and functions of a high-end digital copier, fast network printer, high-speed fax machine and digital network scanner. So you can count on exceptional image quality for every document you produce.

Easy operation. For walk-up users, the 5622/27 offers a large touch-screen LCD that guides you through tasks step-by-step. For network applications, it features an intuitive, point-and-click PC interface. Either way, you can finish every task quickly and easily.

Advanced technology. The 5622/27 can be configured with a hard drive and software utilities that enable next-generation document management — including PC faxing, scan to email, network scanning, file merging, document editing and print-on-demand.

Dynamic document management

The 5622/27 has an optional high-capacity document server for storing frequently printed documents. You can access these files over the network or at the system — then print, copy or finish them at your convenience. With additional software, you can use the document server hard drive to merge files from several sources. For example, you can download a PowerPoint® presentation and an Excel® file to the server, then merge both with a scanned hardcopy original in a single new file. This document can be faxed to 50 locations, copied and stapled, or downloaded to your PC and distributed via email. Plus, all of these functions can be controlled directly from a PC interface.

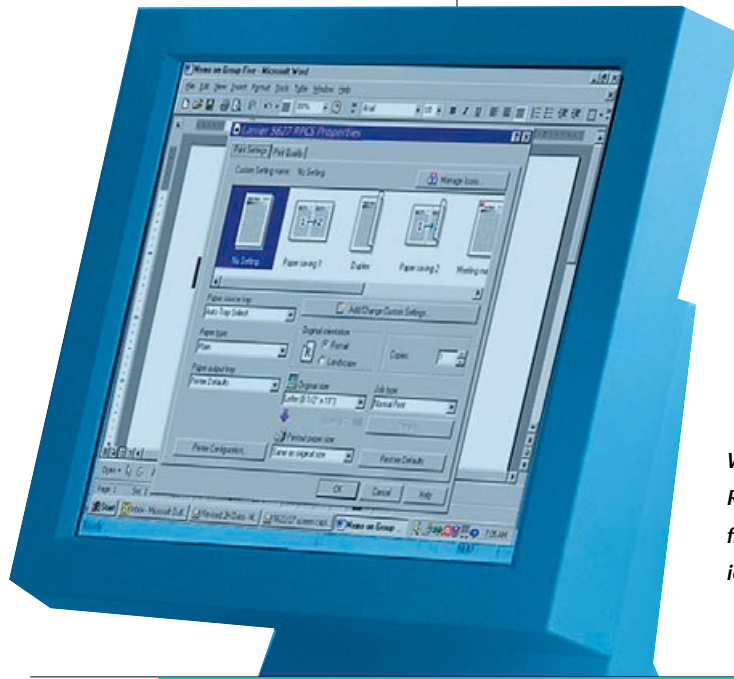
The large touch-screen display makes it easy for users to select paper size and quantity, as well as duplexing, finishing, sorting, watermarks and other special features.

With DeskTopBinder software, users can easily view, merge and manage documents archived on the document server.



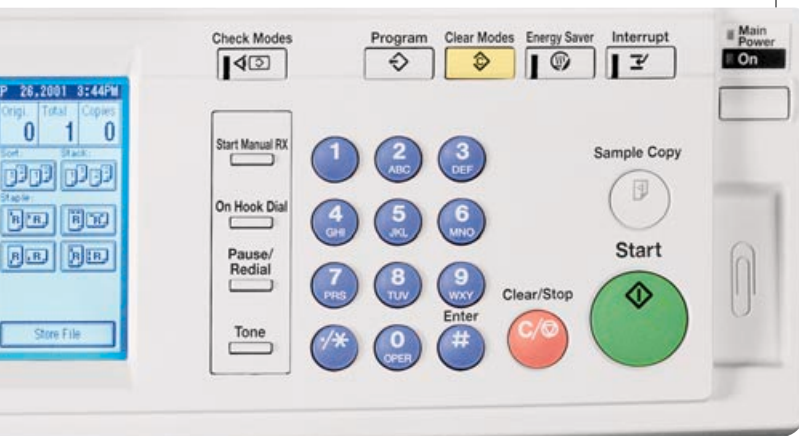
Comprehensive scanning and faxing

As a network scanner, the 5622/27 lets you convert hardcopy originals into digital files — then access those files from your PC, send them to anyone on the LAN, or send them to an email address outside the network. As a fax machine, the 5622/27 scans one page in just 0.6 seconds and prints faxes at its full rated speed. Transmission is 33.6 kbps, and the system can be equipped with a dual modem for simultaneous send/receive. Advanced paper handling includes 11" x 17" send/receive and optional duplex receive, which significantly reduces paper usage. You can even send faxes directly from your PC with the optional LAN fax capability — which eliminates hardcopy scanning and boosts image quality for outgoing faxes.



When you choose the unique RPCS print driver, you can save frequently used job settings as icons on your PC desktop.

High-quality output for a wide range of documents



Ultra-fast network printing

Connect the 5622/27 to your LAN for smooth network printing. Image quality stays high at 600 dpi. Advanced printing options include two-sided and 2-on-1 combined printing. With the secure printing feature, any job sent to the 5622/27 over the network will be stored in memory until a walk-up user provides the correct password. Job programs allow you to store specific settings — like stapling and watermarks — as an icon on your desktop. Any time you need the same settings, you just point and click. Plus, the 5622/27 offers a choice of drivers — either conventional PCL or innovative RPCS technology, which processes print jobs significantly faster than competitive systems.

Digital copying and professional finishing

The 5622/27 delivers 22 or 27 digital copies per minute at 600 dpi. Image quality is outstanding, so you can count on bold, deep blacks, precise registration and accurate reproductions. It holds a maximum of 3,100 sheets to minimize reloading and increase productivity. Warm-up time is just 15 seconds, so you can start your work quickly. Finishing options include three-position stapling, duplexing and sorting, all of which make it easy to produce attractive, professional-quality documents.

About Lanier Worldwide

With 1,600 sales and service locations, Lanier Worldwide, Inc. and its dealer and distributor network form one of the largest global providers of document management solutions. Lanier and its dealers and distributors help customers in more than 100 countries create, enhance and distribute documents with greater speed, efficiency and economy. To do this, we employ DOCutivity®, a document lifecycle approach designed to improve business productivity. Our comprehensive solutions portfolio includes digital color copier/printers, black-and-white digital copier/printers, multifunction devices, print-on-demand applications and outsourcing services.



SPECIFICATIONS

BASE SYSTEM

Machine Type	Console
Process	CCD scanning and laser electrophotographic printing
Max. Output Speed	22/27 ppm
Resolution/Grayscale	600 dpi/256 levels
First Copy Time	4.9 seconds
Paper Supply (standard)	2 x 500-sheet trays
Min./Max. Output Size	5.5" x 8.5"/11" x 17"
User Interface	LCD touch-screen with multiple languages
Dimensions (WxDxH)	21.7" x 23.8" x 28.0"
Weight	121.3 lbs.
Power Requirement	110 - 120V, 60 Hz

OPTIONAL PRINTER MODULE

Max. Print Speed, Resolution	22/27 ppm, 600 dpi
Printer Emulations	Standard: PCL5e, PCL6, RPCS Optional: Adobe PS3
Fonts	35 Intellifonts, 10 TrueType, 1 Bitmap, 136 Adobe Type 1
Memory	96MB standard, optional 6GB HDD
Interface	Standard: Parallel Centronics Optional: NIC (Ethernet 100 BaseTX, 10BaseT)
Drivers	RPCS: Microsoft Windows 95/98/Me/NT4.0/2000 PCL: Microsoft Windows 95/98/Me/NT4.0/2000 PS3: Microsoft Windows 95/98/Me/NT4.0/2000; Mac 8.6 or later
Network Support (optional)	Novell Netware 3.12, 3.2, 4.x, 5.0; Microsoft Windows NT 4.0; Microsoft 2000; Microsoft Windows 95/98/Me; Mac OS 7.6, 8.1, 8.5, 8.51, 8.6, 9
Additional Features	Stapling, Locked Print, Sample Print, Duplex Printing, Watermarks

Optional Printer/Scanner Module	Optical resolution 600 dpi, 256 level grayscale, scan speed 53 opm
---------------------------------	--

OPTIONAL FAX MODULE

Modem Speed	33.6 Kbps
Max. Scan Size	11" x 17"
Memory	2MB standard, 32MB optional
Group Dial Lists	64 groups, 500 numbers per group
Special Reception Modes	Reception Mode Selection, Duplex Reception and Transmission, Ledger Send and Receive, Book Fax

OPTIONAL DOCUMENT MANAGEMENT

ScanRouter Pro Software	Scan and distribute, scan to file, scan to email
DeskTopBinder Pro Software	Search, view, edit, reprint, re-fax stored documents

For best results, we recommend that you use only Lanier consumables and supplies. Due to our policy of continual improvement, Lanier reserves the right to alter specifications of these products without prior notice.

Transmission times apply to text data using the ITU-T No. 1 test chart phase C in standard resolution, between the same or similar machines at maximum modem speed. Transmission times may vary in actual use.

All registered trademarks or trade names are property of their respective owners and are hereby acknowledged.

OPTIONS

RADF	
Input Paper Supply (2 x 500-sheet trays)	
Large Capacity Tray (2,000 sheets)	
Bypass Tray (100 sheets)	
1-bin Exit Tray (125 sheets)	
Duplex Unit (continuous, single-pass)	
Shift Sort Tray (250 sheets)	
500-sheet Finisher (30-sheet stapling capacity, single position)	
1,000-sheet Finisher (50-sheet stapling capacity, single position)	

DIGITAL COPIER/
PRINTER/FAX/
SCAN SYSTEMS

Lanier, a world of difference

The Lanier philosophy is embodied in Customer Vision®: a commitment we make every day. It means seeing the business through your eyes, responding to your needs and exceeding your expectations.



Lanier Worldwide, Inc.
2300 Parklake Drive NE
Atlanta, GA USA 30345



As an ENERGY STAR® partner, Lanier has determined that this product meets the ENERGY STAR guidelines for energy efficiency.