



Next-generation digital document systems

The complete solution to bring your department into the digital age.

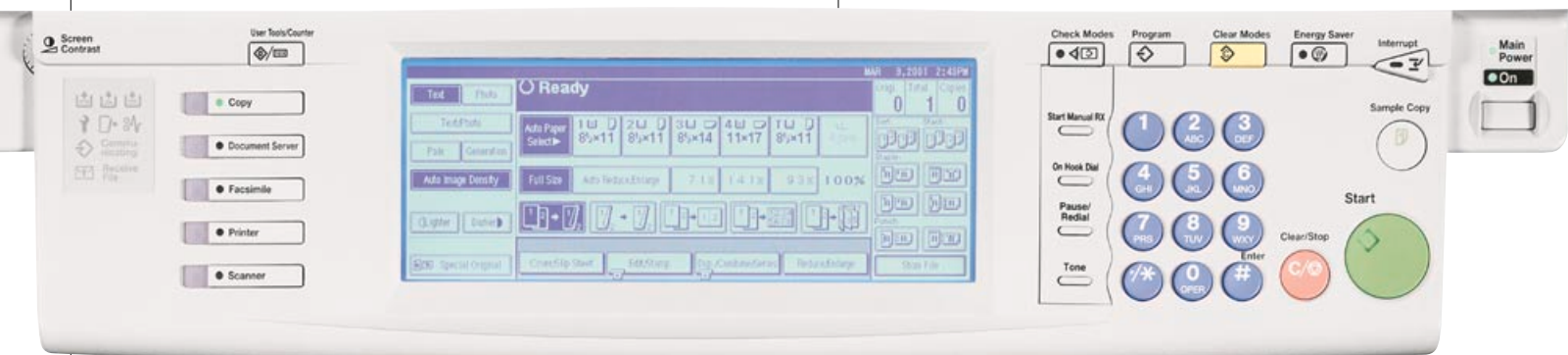
DIGITAL COPIER/
PRINTER/FAX/
SCAN SYSTEMS



To create documents and complete daily tasks, most departments use a standalone copier, a networked laser printer and a local fax machine. The Lanier 5635 and 5645 combine all of these copying, printing and faxing capabilities, plus network scanning, in one powerful platform that transforms your department for high productivity.

High-performance digital copying

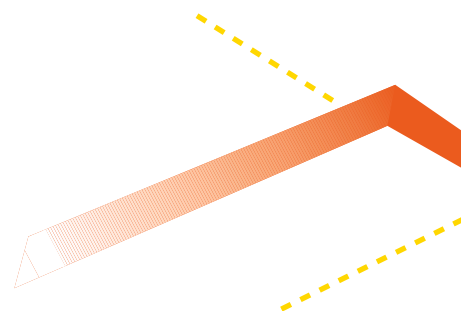
As a digital copier, the Lanier 5635/45 provides everything you need to complete copying jobs — even complicated ones — in record time. For walk-up copying, the control panel features an easy-to-use, logical layout. An optional 80-sheet document feeder accommodates large document sets with ease. The system itself delivers 35 or 45 copies per minute with outstanding resolution and crisp, bold blacks. Standard duplex copying saves paper and filing space. For professional-quality finishing, the optional finishers provide sorting and stapling.




Exceptional network printing

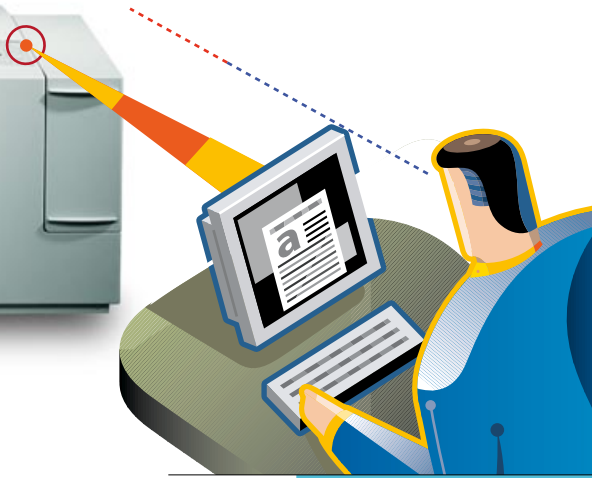
As a network printer, the 5635/45 offers major advantages over the laser printers typically found in departmental environments. For instance, even first-time users can run large, complex jobs effortlessly. Speed is significantly faster at 35 or 45 pages per minute. Total paper capacity is dramatically higher at 3,550 sheets. Plus, users can access the system directly from a desktop PC, using a simple interface that makes it easy to select paper size, duplex printing and finishing options.

Quickly set your copy, print, fax and scanning jobs on the system's large touchscreen.





The Lanier 5635/45 incorporates next-generation digital technology to ensure crisp, clean document quality and high productivity.




Convenient fax capabilities

The optional 5635/45 fax module transforms these systems into a true communications hub with up to two fax ports. When sending your documents, a high-speed scanner offers minimal wait-time at the system. To further enhance productivity there are 400 quick-dial numbers. Additionally, a high-speed modem keeps overall transmission costs low. For fast, uninterrupted fax reception, the 5635/45 offers a large paper supply.

Expand document management in your office

Every time you scan a document for copying, printing or faxing, you can store it in the system's built-in hard disk drive. This creates a virtual warehouse of documents that can be accessed over the network and reprinted on demand, at your convenience. This function is ideal for instruction manuals, policy guides and other large documents. With it you can reprint an exact quantity precisely when you need it.

Improve speed, productivity and quality



For easy handling and distribution of document sets, the 5635/45 enables users to produce sorted, stapled and hole-punched output automatically.

True network scanning

Network scanning allows you to easily convert paper originals into a digital format. This gives you the ability to distribute original documents to anyone on the department's network without compromising image quality. You can then send documents outside the network to any e-mail address around the world.

About Lanier Worldwide

With 1,600 sales and service locations, Lanier Worldwide, Inc. and its dealer and distributor network form one of the largest global providers of document management solutions. Lanier and its dealers and distributors help customers in more than 100 countries create, enhance and distribute documents with greater speed, efficiency and economy. To do this, we employ DOCativity®, a document lifecycle approach designed to improve business productivity. Our comprehensive solutions portfolio includes digital color copier/printers, black-and-white digital copier/printers, multifunction devices, print-on-demand applications and outsourcing services.



SPECIFICATIONS

BASE SYSTEM

Machine type	Console
Printing process	CCD scanning and laser electrophotographic printing
Resolution	600 dpi (scanning and printing)
Gray scale	256 levels
Max. output speed	35/45 ppm
First copy time	4.5/3.6 sec.
Warm-up time	15/20 seconds
Recovery time (from Auto Off)	10/15 seconds
Multiple copies/sets	1 – 999; Electronic sorting
Memory	10 GB HDD
Paper supply (standard)	2 x 500-sheet trays, 50-sheet bypass tray
Max. paper capacity	3,550 sheets including optional paper bank and large-capacity tray
Min./max. output size	A5/A3 (5.5" x 8.5"/11" x 17")
User interface	LCD Touch Screen, multiple-language user interface
Reductions/enlargements	25 – 400% zoom in 1% steps
Duplex (standard)	Yes, limitless
Power requirements	AH version: 220-240V, 50/60 Hz AG version: 120V, 60 Hz

OPTIONS

Feeder	35/45 opm RADF, 80 sheets
1-Bin Exit Tray	125-sheet capacity
System Stand	2 x 500-sheet trays
Large Capacity Tray	1,500 sheets (A4/Letter only)
Finisher	1,000-sheet paper capacity, 30-sheet stapling capacity, single position
Multi-Tray Finisher	2,500-sheet paper capacity, 50-sheet stapling capacity, 4 positions
Hole Punch Unit	2 or 4 holes on AH model, 2 or 3 holes on AG model

OPTIONAL PRINTER MODULE

Maximum print speed/resolution	35/45 ppm, 600 dpi
Interface	Standard parallel Centronics Optional Network Interface Card (Ethernet 100BASE-TX/10BASE-T)
Drivers	PCL5e and PCL6: Win 95/98/Me, WinNT4, Win2000, Win3.1 RPCS: Win 95/98/Me, WinNT4, Win2000 PS3: Win 95/98/Me, WinNT4, Mini-drivers for Win2000, Mac 7.6
9-Bin Mailbox (optional)	Proof tray: 500-sheet capacity; Bin: 100-sheet capacity
Special Features	Rip once, print many; Rotate sort; Duplex printing; Stapling; Hole punching; Job notification

OPTIONAL FAX MODULE

Modem	1x or 2x 33.6 kbps ITU-T (CCITT) G3
Memory	2 MB, optional 24 MB
Special Features	Confidential reception, 30 special reception numbers, Center mark, Checkered mark, Duplex reception

OPTIONAL DOCUMENT MANAGEMENT

DeskTopBinder Software	Search, view, change, reprint, re-fax stored documents
------------------------	--

OPTIONAL NETWORK SCANNING MODULE

ScanRouter Software	Scan and distribute, scan to file
---------------------	-----------------------------------

For best results, we recommend that you use only Lanier consumables and supplies. Due to our policy of continual improvement, Lanier reserves the right to alter specifications of this product without prior notice.



DIGITAL COPIER/
PRINTER/FAX/
SCAN SYSTEMS

Lanier, a world of difference

The Lanier philosophy is embodied in Customer Vision®: a commitment we make every day. It means seeing the business through your eyes, responding to your needs and exceeding your expectations.



Lanier Worldwide, Inc.
2300 Parklake Drive NE
Atlanta, GA USA 30345